

FOR IMMEDIATE RELEASE

03-July-2018

Elation's all-weather Cuepix 16 IP™ a cutting-edge LED matrix panel

As more and more projects and shows are staged outdoors, Elation Professional is again expanding on its leading line of multi-environmental IP-rated products with the new Cuepix 16 IP™. The Cuepix 16 IP is a powerful 4x4 matrix LED blinder and effect panel with all-weather IP65 protection. An updated version of the company's Cuepix Panel™, Elation's popular 5 x 5 LED matrix panel that has enjoyed great success since launching 5 years ago, the Cuepix 16 IP fulfills the need for more IP-rated blinder/effect options.



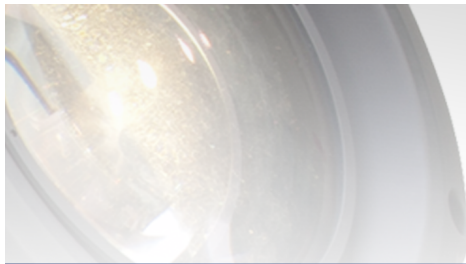
Lighting fixtures mounted on a downstage truss like blinder/effect lights, or general area wash fixtures, are especially exposed to the elements. Now designers can add high-impact color or white light, eye candy or pixel-mapped effects, to productions of all types, indoors or out, without the worry of weather and cost and inconvenience of protective coverings.

The sleekly-designed Cuepix 16 IP houses 16 long-life 30W RGBA COB LEDs for a full spectrum of well-balanced, custom colors (saturates to pastels) with no pixelated rainbow shadows. The added amber LED compared to the RGB-based Cuepix Panel extends the possible range of colors and gives more control over white balance, producing a better warm white. The COB LEDs give a higher-density output and a more even light distribution for superior all-around performance.

Each COB module is individually controllable for a wider scope of design possibilities while RGB, dynamic amber and pixel flip modes add to its creative potential. The five included pixel flip modes make it easier for users to uniformly configure all pixels in multi-panel configurations regardless of their installation orientation.

The high-power LED color matrix projects a wide 62° beam angle with an 87° field angle for better coverage while maintaining a high level of uniformity. When used with cameras, the silent fixture works absolutely flicker-free thanks to its user-adjustable LED refresh rate and Gamma brightness settings. The Cuepix 16 IP dims smoothly all the way to zero with adjustable dimming curves included for programming ease. The fixture also includes an adjustable high-speed strobe (1-18fps) for those energetic flashes of light.

The Cuepix 16 IP is easy to use with a 4 x 4 semi-transparent blow-through design that not only keeps the weight down (33.0 lbs., 15 kg) but allows multiple fixtures to be easily linked together to



www.ElationLighting.com

FOR IMMEDIATE RELEASE

create horizontal and vertical arrays. Versatile rigging options include 90° adjustable and fixed yoke brackets with 3-position mounting holes. Convenient features like integrated alignment pins and interlocks make multiple panel matrix designs easy to set up and disassemble. Optional Omega Brackets are also available.

Professional control options include DMX (14 DMX channel modes from 3-128 channels) and RDM (Remote Device Management) while on-board Art-NET and KlingNET™ protocols allow for more creative pixel-mapping designs. The fixture is outfitted with IP-rated 5pin DMX, RJ45 etherCON, and Seetronic Powerkon IP65 in/out connections. A 4-button control panel with LCD menu display makes for easy navigation through DMX and manual settings and an auto-sensing power supply allows the unit to operate anywhere in the world.

The Cuepix 16 IP offers all the benefits of LED like greater reliability and less maintenance. It consumes little power (520W max power consumption) for a lower cost of ownership and with a long LED life rating, service intervals are few and far between.

About Elation Professional

Elation Professional is one of the world's leading lighting and visual solutions providers and is the global brand of Elation Lighting. Founded in 1992 and headquartered in Los Angeles, with European sales, distribution and support based in The Netherlands, Elation designs and manufactures a comprehensive range of innovative yet affordable lighting and video products that are distributed through a global network of dealers and distributors. Made up of a spirited team of dedicated personnel, Elation is setting new efficiency and performance standards in Platinum lamp and LED technology and is acknowledged for a comprehensive commitment to Total Support. As a company in expansion with a presence in a growing variety of market segments, chances are you've experienced Elation lighting at a concert, special event, TV, theater, late night venue, House of Worship, theme park, cruise ship, exhibition, architectural space or elsewhere. For more information, please visit www.elationlighting.com

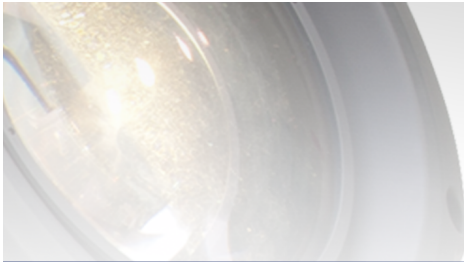
For more information, contact:

Elation Professional US

6122 S. Eastern Avenue
Los Angeles, CA 90040
USA
Tel: (866) 245-6726 (toll free)
Tel: (323) 582-3322
sales@elationlighting.com
www.elationlighting.com

Elation Professional EU

Junostraat 2.
6468 EW Kerkrade
The Netherlands
Tel: +31 (0)45 546 85 66
info@elationlighting.eu



www.ElationLighting.com

FOR IMMEDIATE RELEASE IMMEDIATE RELEASE

www.elationlighting.eu

Elation Professional Mexico

Av Santa Ana 30,

Parque Industrial Lerma,

Lerma, Mexico 52000

Tel: +011 52 728 282 7070

ventas@elationlighting.com

www.elationlighting.com