



FOR IMMEDIATE RELEASE

06-May-2025

Elation Lighting Brings New Life to Poland's Historic Stefan Żeromski Theater

PS TEATR leads technical overhaul, delivering a new era of stage innovation for premier venue

Following a four-year renovation, the historic Stefan Żeromski Theater in Kielce, Poland, has regained its former splendor, with modern technical solutions providing designers and audiences a greater visual experience. The theater has emerged as one of Poland's most technologically advanced dramatic stages, with Elation lighting fixtures playing a key role in shaping its modern artistic identity.



Founded in 1879, the theater is one of the oldest in Poland, staging both classic and contemporary plays, and other theater-related events. It recently underwent a complete reconstruction and expansion that balances heritage preservation with cutting-edge stage capabilities.

PS TEATR

Elation's Polish partner, PS TEATR, was entrusted with integrating and implementing the new stage technology. In the theater's Grand Stage and Chamber Stage, PS TEATR integrated a flexible lighting system anchored by an extensive array of Elation luminaires. The company additionally



FOR IMMEDIATE RELEASE

installed and configured the venue's power infrastructure, stage automation, curtain system, immersive sound setup, and multimedia technology.

Grand Stage / Chamber Stage

Given its scale, the Grand Stage required powerful moving head fixtures with a range of effects to achieve the desired creative flexibility. The centerpiece of this transformation includes Elation [FUZE MAX PROFILE](#) and [FUZE MAX SPOT](#) luminaires (12 total), which deliver high-output effects with framing precision. Six [ARTISTE PICASSO](#) framing profile luminaires complement the system for rich beam animation and theatrical impact.



These are complemented by Elation [KL FRESNEL 8](#) warm-white floodlights (30), whose silent operation, motorized zoom, and barndoor framing have won high praise among the theater's technicians and producers. To enhance visual depth and color flexibility, 36 Elation [KL PAR FC](#) lights and 10 [SIXBAR 1000](#) LED bars have been deployed for vibrant washes and color effects.

On the smaller Chamber Stage, the lighting versatility theme continues with [FUZE SFX](#) spot FX moving heads (10), providing easy transitions between spot effects and wash functions, an ideal flexible luminaire for the venue's more intimate performances.

Together, these fixtures allow for a full range of atmospheres—subtle or bold, traditional or experimental—empowering designers to shape each production with exceptional creativity and precision. “Elation fixtures offered the perfect balance of power, flexibility, and silent operation needed for a venue like Żeromski Theater,” said Dominik Drobisz, who supervised the work on behalf of PS TEATR and reports that feedback on the new stage technology has been overwhelmingly positive. “The new lighting has met the aesthetic expectations of designers and the technical demands of a full-scale, modern performance venue.”

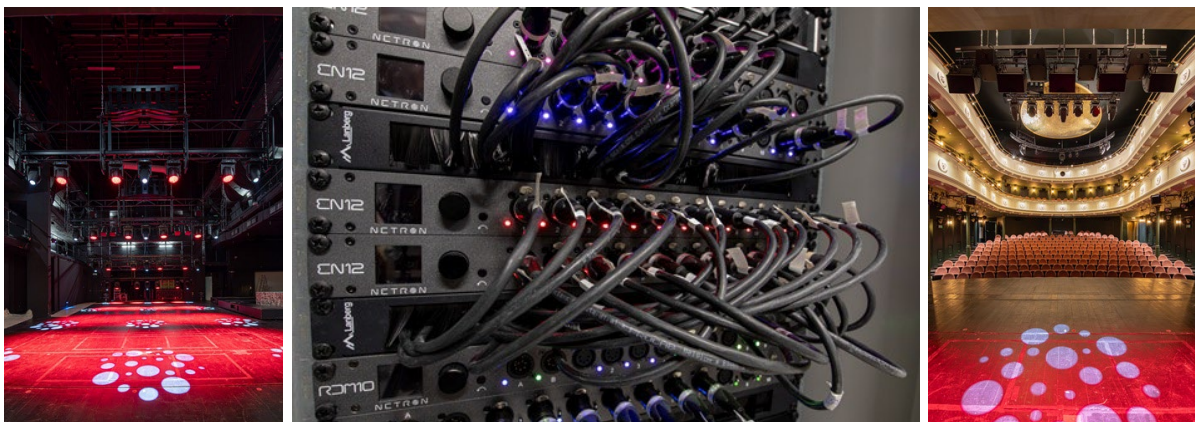
NETRON

The lighting system uses reliable signal distribution using Obsidian [NETRON](#) series nodes and splitters, offering flexibility across multiple performance spaces. Control racks are equipped with 6 Obsidian EN12, 1 RDM10, and 4 DMX 10-5 splitters. Twenty EN4/EP4 nodes support the local



FOR IMMEDIATE RELEASE

DMX/ETH conversion. The distribution system, based on sACN parallel to the DMX protocol, is both flexible and scalable.



The new Elation lighting system opens a world of creative possibilities, allowing designers to create multidimensional lighting environments that better draw spectators into the on-stage theatrics.

The investment in Elation products—part of a broader technical overhaul by PS TEATR—has allowed the Stefan Żeromski Theater to reclaim its place as a cultural landmark while standing as a model for how historical venues can embrace the future of live performance with modern lighting.

About Elation

At Elation, we represent the elite in the lighting industry. We design and manufacture a comprehensive range of best-in-class entertainment lighting products valued by production/rental houses and lighting designers worldwide. Our dedication to extraordinary quality and creative solutions has established us as the go-to choice for professionals. With a storied legacy of brilliance, our influence extends from iconic stages to cutting-edge studios across the globe. We also offer an advanced line of lighting control products through Obsidian Control Systems, and a full range of dependable specialty effects called Magmatic. We invite you to take a closer look at www.elationlighting.com and elation.global

For more information, contact:

Elation US

6122 S. Eastern Avenue
Los Angeles, CA 90040
USA
Tel: (866) 245-6726 (toll free)
Tel: 323 582-3322
sales@elationlighting.com
www.elationlighting.com

Elation EU

Junostraat 2.
6468 EW Kerkrade
The Netherlands



FOR IMMEDIATE RELEASE

Tel: +31 (0)45 546 85 66
info@elationlighting.eu
www.elationlighting.eu

Elation Mexico

Av Santa Ana 30,
Parque Industrial Lerma,
Lerma, Mexico 52000
Tel: +011 52 728 282 7070
ventas@elationlighting.com
www.elationlighting.com